



ADRI LAB

162' FSV

SAFE, DEPENDABLE, AND MODERN OFFSHORE SUPPORT

REGISTRATION

USCG Official Number	1202663
GRT / ITC	99
Net	67
IMO	8739023
Year Built	2007
Flag	USA
Builder	Breaux Brother's
O.N.	1202663
Certifications	Subchapters T

MAIN CHARACTERISTICS

Length overall	162 ft	(49.4 m)
Beam	30 ft	(9.1 m)
Depth	11.6 ft	(3.5 m)
Max Draft	8 ft	(1.7 m)
Min Draft	7 ft	(1.7 m)

PERFORMANCE

Max Speed	22 knots	300 gal/hr	(1.135 l/hr)
Cruising Speed	18 knots	225 gal/hr	(851 l/hr)

MACHINERY

Main Engines	2x Caterpillar 3512B
Total Horsepower	6,300 BHP
Main Propulsion	Conventional
Total Horsepower	6,300 BHP
Main Generators	2 John Deer 6068
Total Rating	2 x 80 kW
Bow Thrusters	1x Tunnel
Total Horsepower	300 BHP
Emergency Generator	208 V

CAPACITIES AND DISCHARGE RATES

Deadweight	350 Lt	(356 MT)
Deck Capacity	250 Lt	(254 MT)
Deck Strength	400 lbs/ft ²	(2 t/m ²)
Cargo Deck Area	97 ft x 24 ft	(2,500 ft ²)
	30.5 M X 7.62 M	(232 M ²)
Drill/Rig Water	29,580 USG	(112.0 M ³)
Fuel	18,546 USG	(70.2 M ³)
Potable Water	900 USG	(3.41 M ³)

ELECTRONICS

(1) AIS
(1) GPS
(2) Radars
(2) VHF Ra

ACCOMMODATIONS

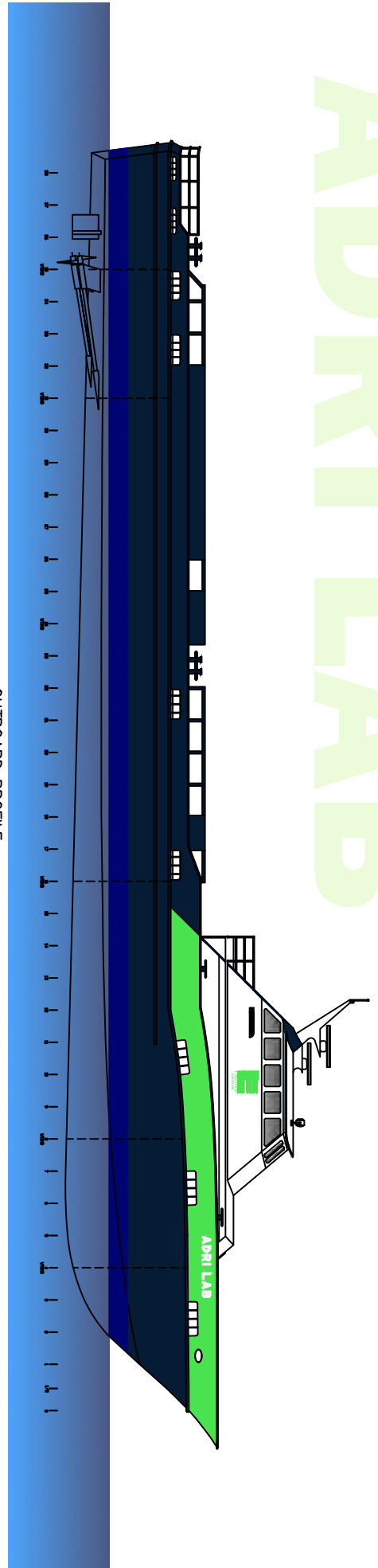
Accommodations	10 Persons in 5 staterooms
Seating	80 seats with all required safety equipment
Certifies Standby	Certified for 84 persons

ADRI LAB

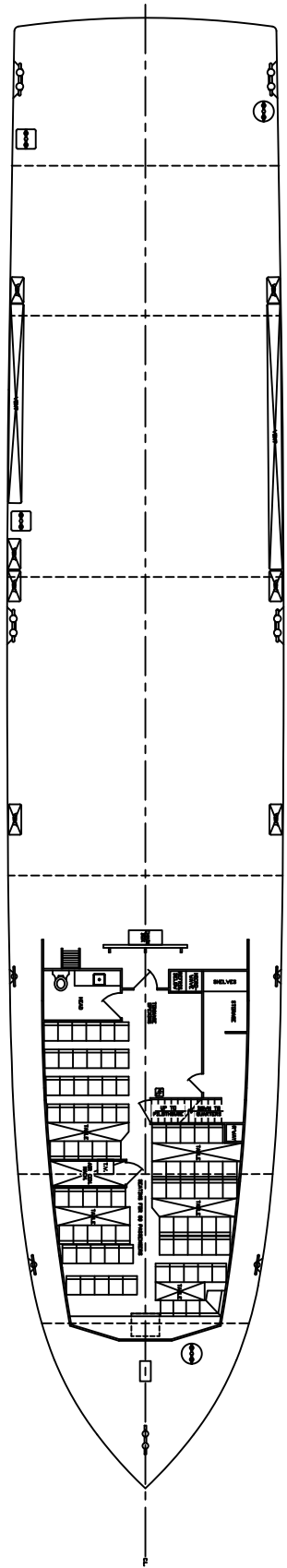
Discharge Rate	150 GPM	(304.2 M ³ /hr)
Discharge Rate	150 GPM	(304.2 M ³ /hr)

NOTICE: The data contained herein is provided for convenience of reference to allow users to determine the suitability of the Company's equipment. The data may vary from the current condition of equipment which can only be determined by physical inspection. Company has exercised due diligence to insure that the data contained herein is reasonably accurate. However, Company does not warrant the accuracy or completeness of the data. In no event shall Company be liable for any damages whatsoever arising out of the use or inability to use the data contained herein.

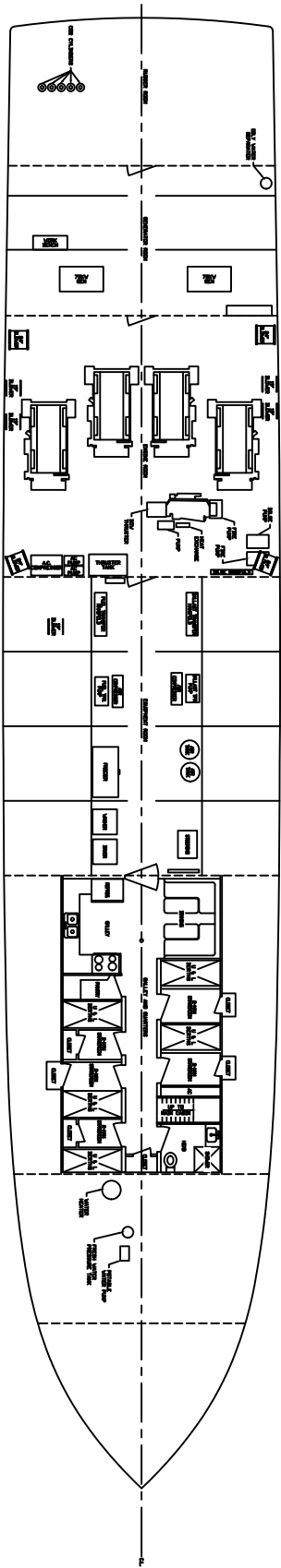
ADRRI LAB



OUTBOARD PROFILE



MAIN DECK PLAN



LOWER ACCOMMODATIONS AND MACHINERY ARRANGEMENT