



# DEEP RUNNER

## 190' DP-2 FSV

### SAFE, DEPENDABLE, AND MODERN OFFSHORE SUPPORT

#### REGISTRATION

USCG Official Number	1256261
GRT / ITC	99
Net	131
IMO	9772773
Classification ID	14251107
Classification	ABS
Year Built	2014
Flag	USA
Builder	Breaux Bay Craft
O.N.	1256261
Certifications	Subchapter T
Notations	✱A1, HSC Crewboat, DomesBc Service, ✱AMS, ✱DPS-2

#### MAIN CHARACTERISTICS

Length overall	190 ft	(57.9 m)
Beam	31 ft	(9.5 m)
Depth	14 ft	(4.3 m)
Max Draft	8 ft	(2.7 m)
Min Draft	7 ft	(2.1 m)

#### PERFORMANCE

Max Speed	23 knots	350 gal/hr	(1,325 l/hr)
Cruising Speed	19 knots	250 gal/hr	(1,041 l/hr)

#### MACHINERY

Main Engines	4x Caterpillar 3512C
Total Horsepower	7,600 BHP
Main Propulsion	ConvenBonal Wheels
Total Horsepower	7,600 BHP
Main Generators	2 John Deere 6068
Total Rating	(2) 80 kW
Bow Thrusters	2 X Tunnel
Total Horsepower	(2) 300 HP
Power Generator	208V/60Hz

#### CAPACITIES AND DISCHARGE RATES

Deadweight	565 Lt	(575 Mt)
Deck Capacity	250 Lt	(254 Mt)
Deck Strength	400 lbs/ft <sup>2</sup>	(2 t/m <sup>2</sup> )
Cargo Deck Area	116 ft x 26.5 ft	(3,074 ft <sup>2</sup> )
	35.4 M X 8.07 M	(285 M <sup>2</sup> )
Drill/Rig Water	54,971 USG	(208 M <sup>3</sup> )
Fuel	28,505 USG	(107.9 M <sup>3</sup> )
Potable Water	1,230 USG	(4.66 M <sup>3</sup> )

#### ELECTRONICS

DP-2 System
Full Joy Stick Mode
(2) DGPS Receiver
(3) Wind sensors
(2) Radars
(3) VHF Radios
(1) SB Radios
Cy Scan
(3) Gyros

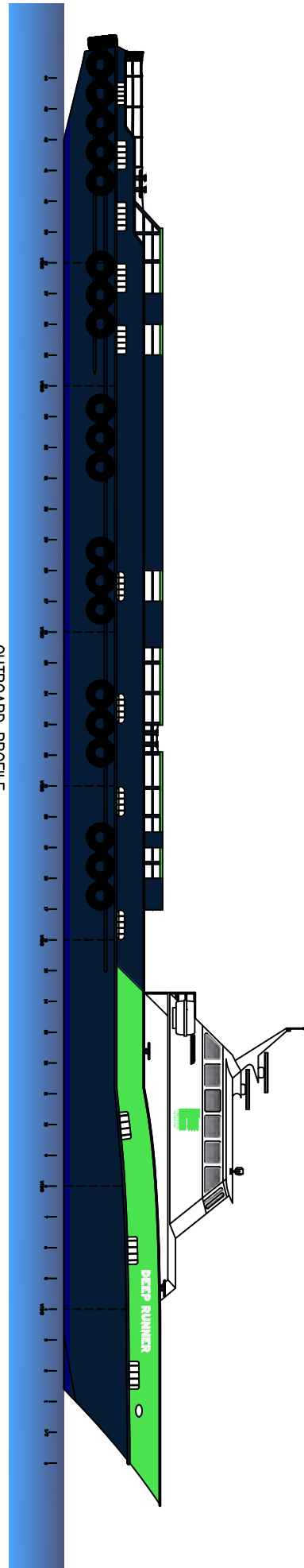
#### ACCOMMODATIONS

Accommodations	12 persons in 5 state rooms
Passenger Seating	74 seats with all safety equipment

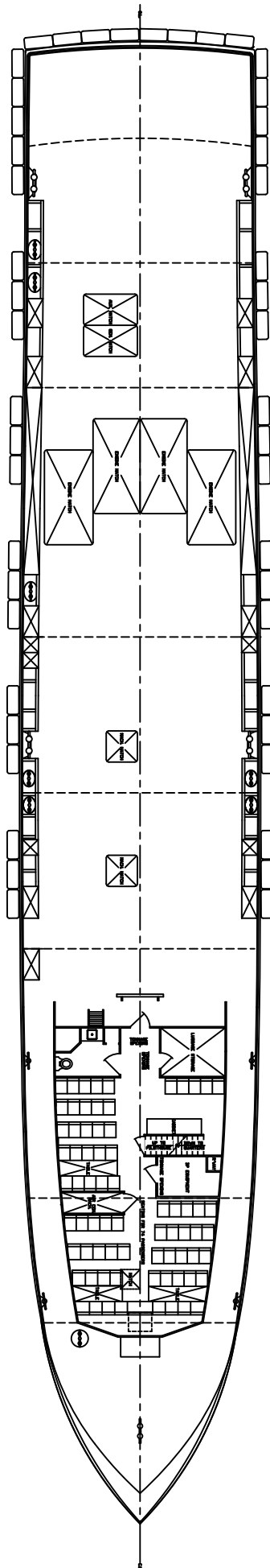
DEEP RUNNER

**NOTICE:** The data contained herein is provided for convenience of reference to allow users to determine the suitability of the Company's equipment. The data may vary from the current condition of equipment which can only be determined by physical inspection. Company has exercised due diligence to insure that the data contained herein is reasonably accurate. However, Company does not warrant the accuracy or completeness of the data. In no event shall Company be liable for any damages whatsoever arising out of the use or inability to use the data contained herein.

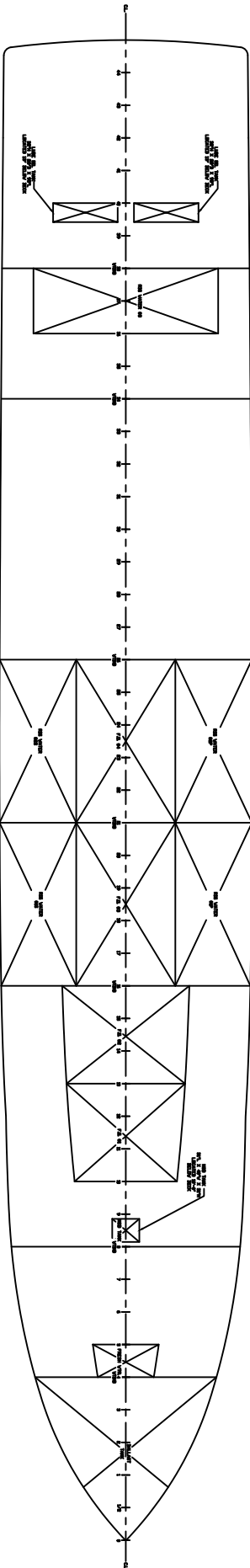
# DEEP RUNNER



OUTBOARD PROFILE



MAIN DECK PLAN



HOLD PLAN