



HILDA LAB

280' Class DP-2 OSV

SAFE, DEPENDABLE, AND MODERN OFFSHORE SUPPORT

REGISTRATION

USCG Official Number	1217808
GRT / ITC	2,287
Net	686
IMO	9564322
Classification ID	10195451
Classification	ABS
Year Built	2010
Flag	USA
Builder	Easter Ship Builders
O.N.	1217808
Certifications	Subchapters L&I, SOLAS, OSV, ACP
Notations	✠A1, Offshore Support Vessel, ✠ACC, ✠AMS, ✠DPS-2

MAIN CHARACTERISTICS

Length overall	280 ft	(79.2 m)
Beam	60 ft	(18.2 m)
Depth	19.5 ft	(5.9 m)
Max Draft	16 ft	(4.8 m)
Min Draft	8 ft	(2.4 m)

PERFORMANCE

Max Speed	13 knots	240 gal/hr	(908.5l/hr)
Cruising Speed	11 knots	140 gal/hr	(529.9 l/hr)
DP Fuel		35 gal/hr	(132.5 l/hr)

MACHINERY

Main Engines	2x Caterpillar 3516B
Total Horsepower	5,150 BHP
Main Propulsion	2 x Azimuthing Z- Drives
Total Horsepower	5,150 BHP
Main Generators	3 x Caterpillar C-18
Total Rating	1,275 kW
Bow Thrusters	2x Caterpillar C-32
Total Horsepower	2,400 BHP
Emergency Generator	1x John Deere 6081
Total Rating	125 kW

CAPACITIES AND DISCHARGE RATES

Deadweight	3,697 Lt	3,757 Mt
Deck Strength	1,080 lbs/ft ²	(5 t/m ²)
Cargo Deck Area	185 ft x 52 ft	(9,620 ft ²)
	58.5 M X 15.8 M	(893 M ²)
Drill/Rig Water	279,966 USG	(1057 M ³)
Fuel	275,091 USG	(1041 M ³)
Liquid Mud	10,580 Bbls	(1,682 M ³)
(Multiple Tank Configurations with Segregated Fills and Discharges)		
Dry Bulk	12,355 ft ²	(350 M ³)
Potable Water	12,336 USG	(46.7 M ³)
Methanol	1,442 Bbls	(230 M ³)
Fire Monitor	2x2,600 GPM	(2x591 M ³ /h)

ELECTRONICS

- (2) Kongsberg K-POS DP-2 Systems Full Auto with Full and Mixed Joy Stick Mode C-Joy, C-Wing, Alarm Printer, Multi Targets
- (3) DGPS Receivers
- Radius 1000 Interrogator
- (2) Radius 700 Transponders
- MK4.2 2000m. Fan Beam
- (3) Gyro Compasses
- (3) Wind Sensors
- (3) MRU
- (2) Radars
- GMDSS
- (4)VHF Radios
- (2) SSB Radios
- Bridge Navigation Watch Alarm System

ACCOMMODATIONS

- Accommodations for 27 persons
- (1) 1 Person room
- (2) 2 Person rooms
- (2) 3 Person rooms
- (4) 4 Person rooms
- In addition, the vessel is also equipped with a room designed to serve as a 1 bunk infirmary

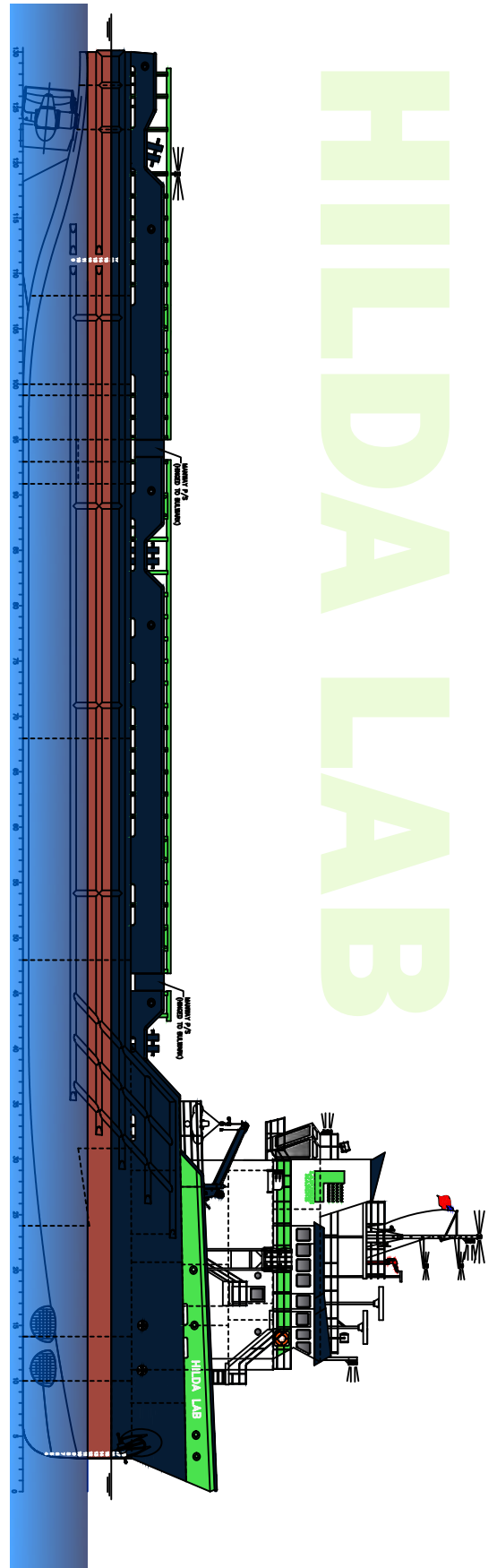
SPECIAL FEATURES

- (2) ABS Approved Cargo Monitoring and Pumping Systems
- Computerized Vessel Stability Management
- Online and Satellite Communications
- Certified Offshore Standby for (90) Persons

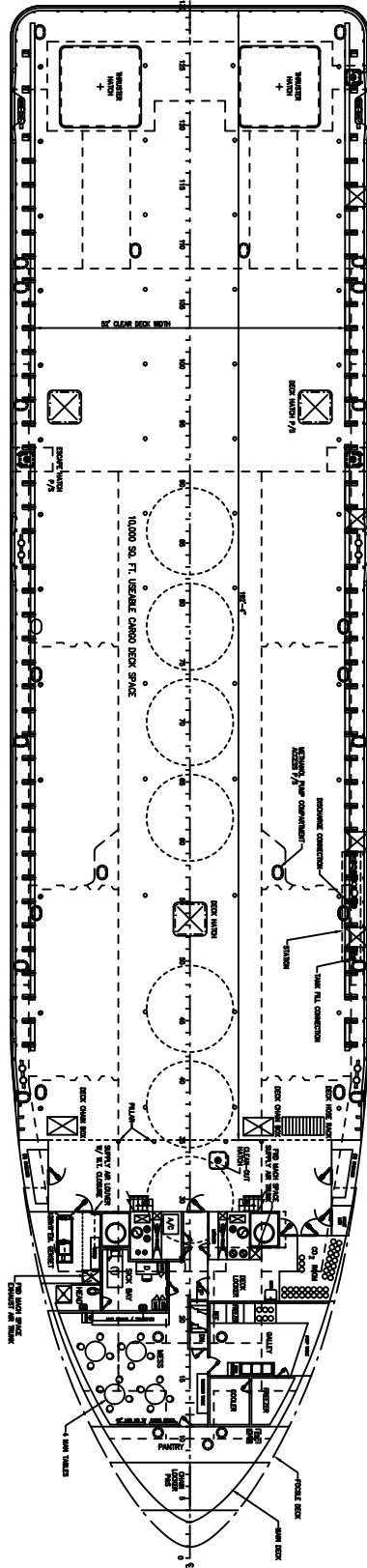
NOTICE: The data contained herein is provided for convenience of reference to allow users to determine the suitability of the Company's equipment. The data may vary from the current condition of equipment which can only be determined by physical inspection. Company has exercised due diligence to insure that the data contained herein is reasonably accurate. However, Company does not warrant the accuracy or completeness of the data. In no event shall Company be liable for any damages whatsoever arising out of the use or inability to use the data contained herein.

Discharge Rate	750 GPM	(170 M ³ /hr)
Discharge Rate	750 GPM	(170 M ³ /hr)
Discharge Rate	1,000 GPM	(227 M ³ /hr)
Discharge Rate	1,000 ft ³ /hr	(28 M ³ /hr) 80 psi
Discharge Rate	250 GPM	(56 M ³ /hr)

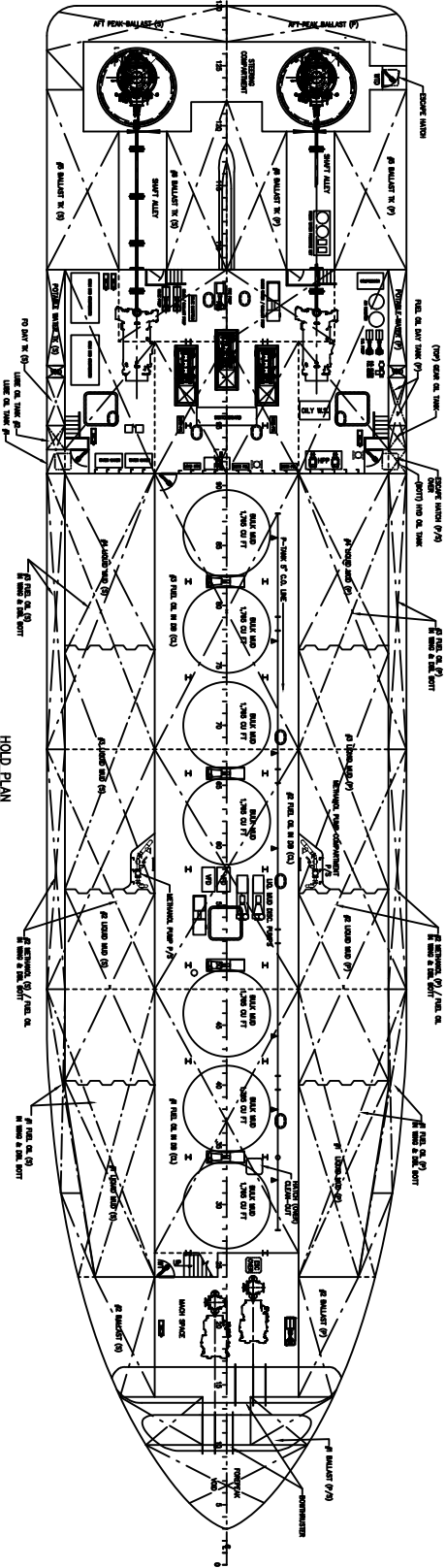
HILDA LAB



OUTBOARD PROFILE



MAIN DECK



HOLD PLAN