



JONATHAN ROZIER

207' DP-1 OSV

SAFE, DEPENDABLE, AND MODERN OFFSHORE SUPPORT

REGISTRATION

USCG Official Number	1151073
GRT / ITC	1,624
Net	511
IMO	9273454
Classification ID	04134841
Classification	ABS
Year Built	2004
Flag	USA
Builder	Bollinger Shipyard
Certifications	Subchapters L & I, Solas

Notations ✠A1, ✠AMS, (E), ✠DPS-1

MAIN CHARACTERISTICS

Length overall	207 ft	(63.1 m)
Beam	53 ft	(16.2 m)
Depth	19 ft	(5.8 m)
Max Draft	16.2 ft	(4.9 m)
Min Draft	6.5 ft	(2 m)

PERFORMANCE

Max Speed	12 knots	240 gal/hr	(726.8 l/hr)
Cruising Speed	10 knots	137 gal/hr	(518.6 l/hr)

MACHINERY

Main Engines	2 x Caterpillar 3516B
Total Horsepower	4,750 BHP
Main Propulsion	2 x Azimuthing Z-Drives
Total Horsepower	4,750 BHP
Main Generators	2 x Caterpillar 3306
Total Rating	570 kW
Bow Thrusters	1 x Caterpillar 3508
Total Horsepower	1,050 BHP

CAPACITIES AND DISCHARGE RATES

Deadweight	2,166 Lt	2,200 Mt
Deck Strength	1,020 lbs/ft ²	(5 t/m ²)
Cargo Deck Area	132 ft x 45 ft	(5,940 ft ²)
	40,2 M X 13.7 M	(550 M ²)
Drill/Rig Water	131,800 USG	(499 M ³) 100%
Fuel	127,300 USG	(482 M ³) 100%
Liquid Mud	6,000 Bbls	(990 M ³) 100%
Dry Bulk	6,000 ft ³ (5) tanks	(170 M ³) 100%
Potable Water	43,000 USG	(166 M ³) 100%

ELECTRONICS

- (1) Beier IVCS 4000 DP-1 System
- Full Joy S9ck Mode
- (3) DGPS Receiver
- (3) Wind sensors
- (2) Radars
- (4) VHF Radios
- Bridge Navigation Watch System
- GMDSS
- (2) SSB Radios
- (2) Gyros

ACCOMMODATIONS

- Max Capacity 26
- (2) 1 Person Room
- (6) 2 Person Room
- (0) 3 Person Room
- (3) 4 Person Room

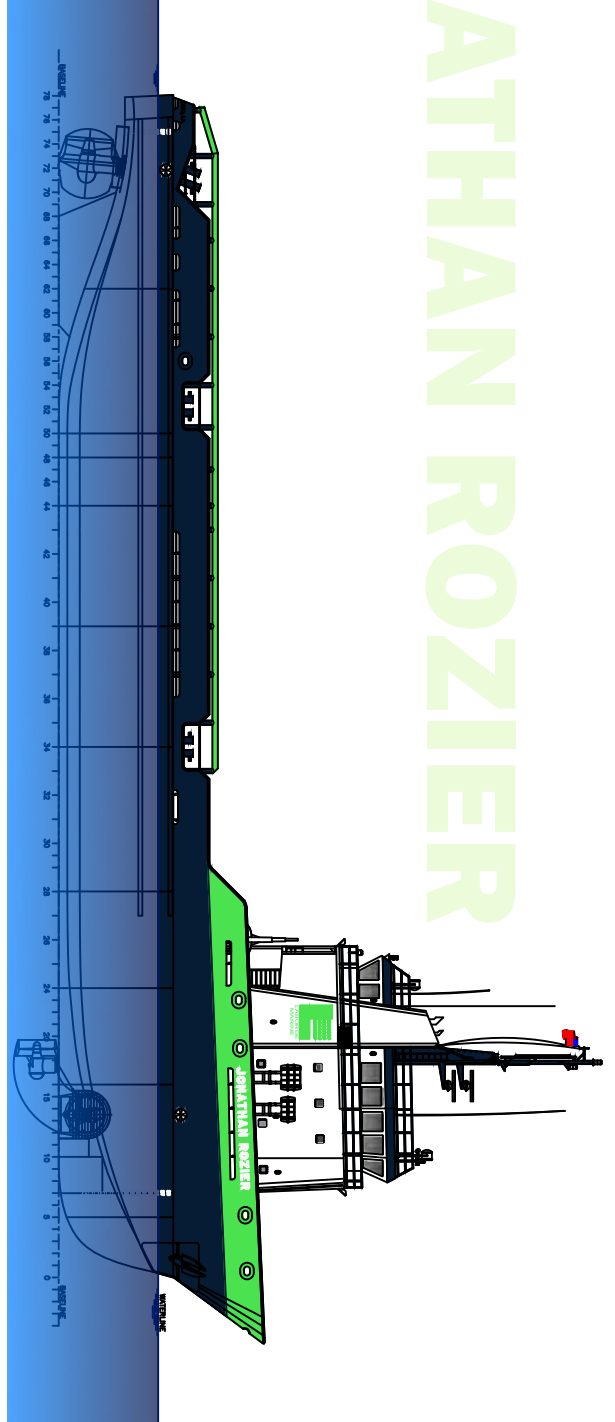
SPECIAL FEATURES

- Segregated Liquid Mud System (2) pumps
- 2 discharge's

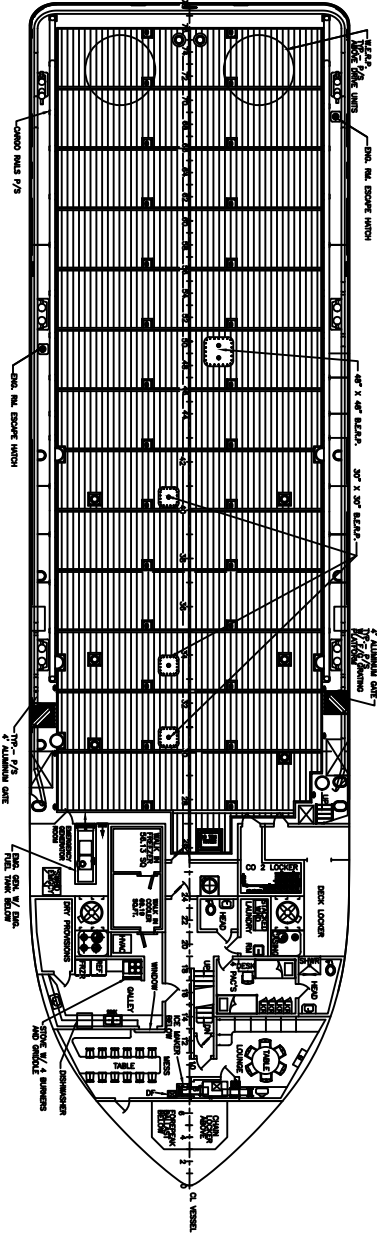
JONATHAN ROZIER

NOTICE: The data contained herein is provided for convenience of reference to allow users to determine the suitability of the Company's equipment. The data may vary from the current condition of equipment which can only be determined by physical inspection. Company has exercised due diligence to insure that the data contained herein is reasonably accurate. However, Company does not warrant the accuracy or completeness of the data. In no event shall Company be liable for any damages whatsoever arising out of the use or inability to use the data contained herein.

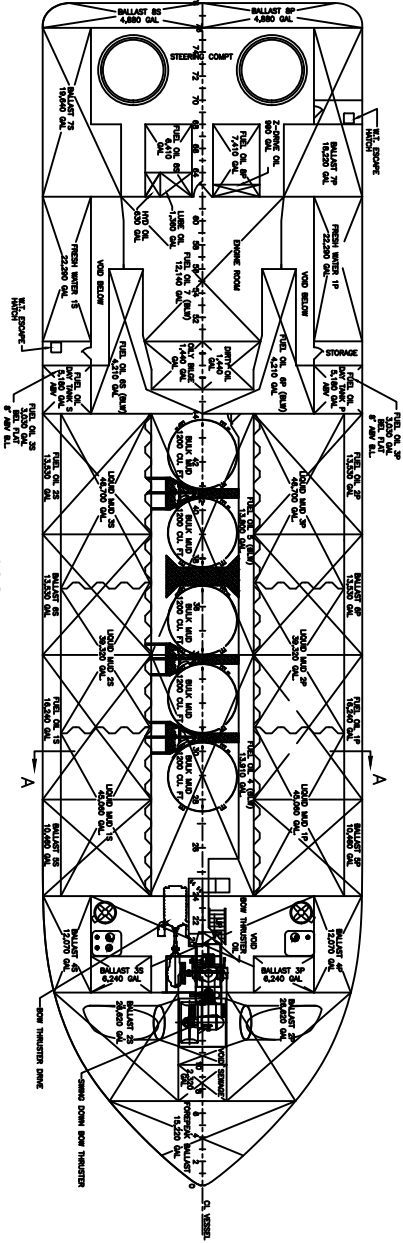
JONATHAN ROZIER



PROFILE



MAIN DECK ARRANGEMENT



HOLD PLAN