



LADY LAB

172' DP-1 FSV

SAFE, DEPENDABLE, AND MODERN OFFSHORE SUPPORT

REGISTRATION

USCG Official Number	1172042
GRT / ITC	99
Net	67
IMO	9370680
Year Built	2005
Flag	USA
Builder	Breaux Bay Craft
O.N.	1172042
Certifications	Subchapter T

MAIN CHARACTERISTICS

Length overall	172 ft	(52.4 m)
Beam	30 ft	(9.1 m)
Depth	11.6 ft	(3.5 m)
Max Draft	8 ft	(2.5 m)
Min Draft	7 ft	(2.1 m)

PERFORMANCE

Max Speed	22 knots	300 gal/hr	(1,325 l/hr)
Cruising Speed	18 knots	225 gal/hr	(1,041 l/hr)
Standby (Genset)	0.0 knots	50 gal/hr	(189 l/da)

MACHINERY

Main Engines	4x Caterpillar 3512B
Total Horsepower	6,300 BHP
Main Propulsion	Conventional
Total Horsepower	6,300 BHP
Main Generators	2 John Deere 6068
Total Rating	(2) 80 kW
Bow Thrusters	1 X Tunnel
Total Horsepower	300 HP
Power Generator	208V/60Hz

CAPACITIES AND DISCHARGE RATES

Deadweight	409 Lt	(416Mt)
Deck Capacity	178 Lt	(180Mt)
Deck Strength	400 lbs/ft ²	(2 t/m ²)
Cargo Deck Area	107 ft x 24 ft	(2,568 ft ²)
	32.6 M X 7.31 M	(238 M ²)
Drill/Rig Water	40,160 USG	(152 M ³)
Fuel	16,560 USG	(62.7 M ³)
Potable Water	821 USG	(3.11 M ³)

ELECTRONICS

Kongsberg DP-1 System
1 x DGPS Receiver
2 Wind Sensors
(2) Radars
(2) VHF Radios
(1) SSB Radios

ACCOMMODATIONS

Accommodations for 8 persons in 4 staterooms

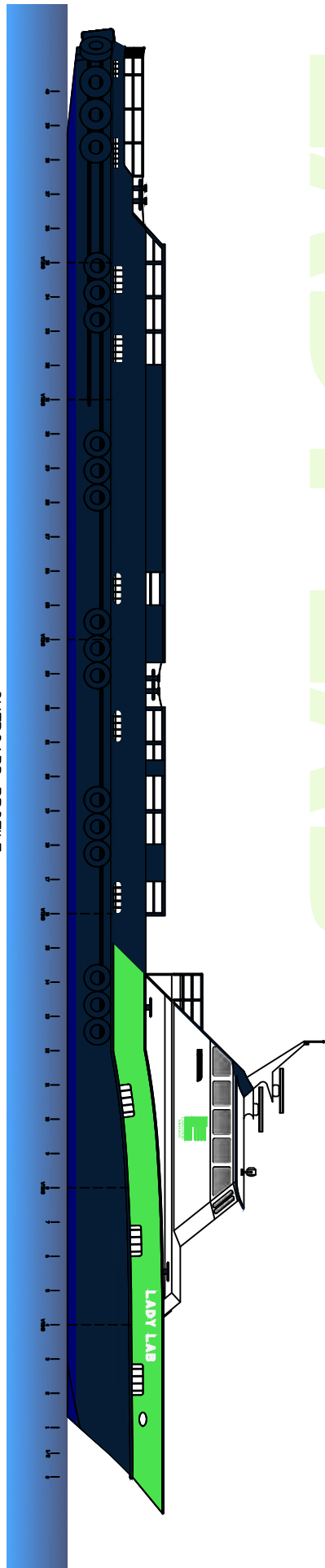
Certified standby endorsement for 72 passengers
72 seats with all required safety equipment

LADY LAB

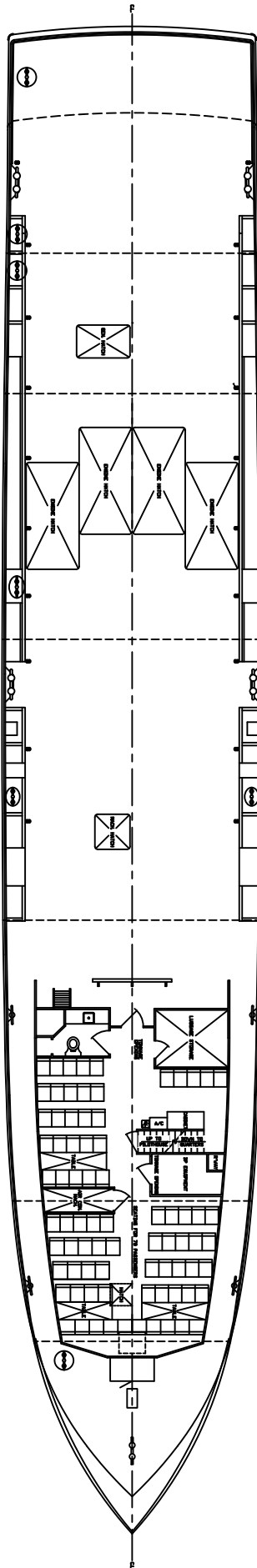
Discharge Rate	150 GPM	(304.2 M ³ /hr)
Discharge Rate	150 GPM	(304.2 M ³ /hr)

NOTICE: The data contained herein is provided for convenience of reference to allow users to determine the suitability of the Company's equipment. The data may vary from the current condition of equipment which can only be determined by physical inspection. Company has exercised due diligence to insure that the data contained herein is reasonably accurate. However, Company does not warrant the accuracy or completeness of the data. In no event shall Company be liable for any damages whatsoever arising out of the use or inability to use the data contained herein.

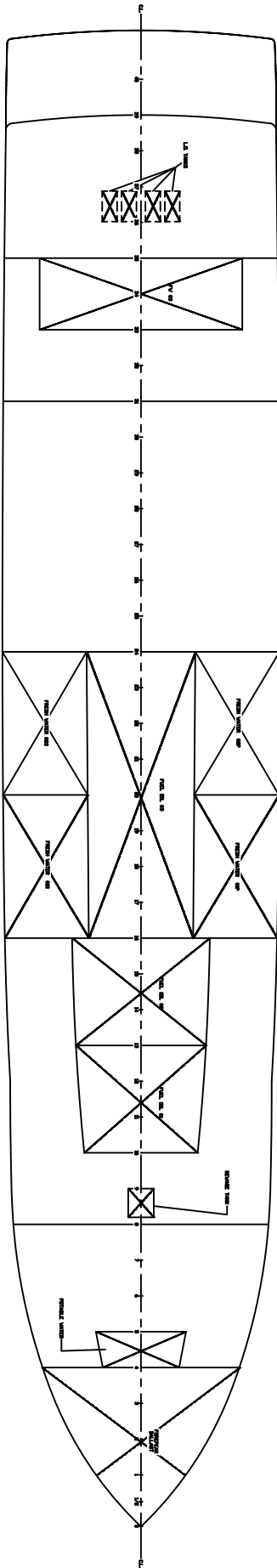
LADY LAB



OUTBOARD PROFILE



MAIN DECK PLAN



HOLD PLAN