



PERSISTENCE LAB
150' DP-1 OSV DWT 500

SAFE, DEPENDABLE, AND MODERN OFFSHORE SUPPORT

REGISTRATION

USCG Official Number	1215137
GRT / ITC	88
Net	60
IMO	9549023
Classification ID	09175598
Classification	ABS
Year Built	2009
Flag	USA
Builder	Master Boat Builders
Certifications	Subchapters L & I, Oceans Load Line Only
Notations	✱A1, ✱AMS,

MAIN CHARACTERISTICS

Length overall	150 ft	(45.7 m)
Beam	36 ft	(11 m)
Depth	12 ft	(3.7 m)
Max Draft	13.5 ft	(4.1 m)
Min Draft	7.5 ft	(2.1 m)

PERFORMANCE

Max Speed	10 knots	100 gal/hr	(379 l/hr)
Cruising Speed	8 knots	85 gal/hr	(378.5 l/hr)

MACHINERY

Main Engines	2x Caterpillar 3508B
Total Horsepower	1,700 BHP
Main Propulsion	Convention Wheels
Total Horsepower	1,700 BHP
Main Generators	2 Caterpillar C-9
Total Rating	(2) 150 kW
Bow Thrusters	1 X Tunnel
Total Horsepower	300 BHP
Power Generator	480V/60Hz

CAPACITIES AND DISCHARGE RATES

Deadweight	500 Lt	Coi 576 DWT
Deck Strength	1,080 lbs/ft ²	(5.25 t/m ²)
Cargo Deck Area	70 ft x 27 ft	(1,890 ft ²)
	27.5 M X 9.2 M	(251 M ²)
Drill/Rig Water	74,300 USG	(272.5 M ³)
Fuel	43,000 USG	(162.8 M ³)
W,L,M Conversion	97,180 100%	
Liquid Mud	1,290 Bbls	(205 M ³)
Potable Water	10,000 USG	(37.8 M ³)
Fire Monitor	1X 2,600 GPM	(1X 591 M ³ /hr)

ELECTRONICS

- (1) Kongsberg Simrad SDP-01 DP-1 System Full Joy Stick Mode
- (2) DGPS Receivers
- (1) MK4.2 2000m.Fan Beam
- (2) Gyro compass
- (2) Wind sensors
- (2) Radars
- GMDSS
- (3) VHF Radios
- SSB Radios

ACCOMMODATIONS

- Max Capacity 20 people
- (2) 4 Person Room
- (3) 2 Person Room
- (1) 6 Person Room

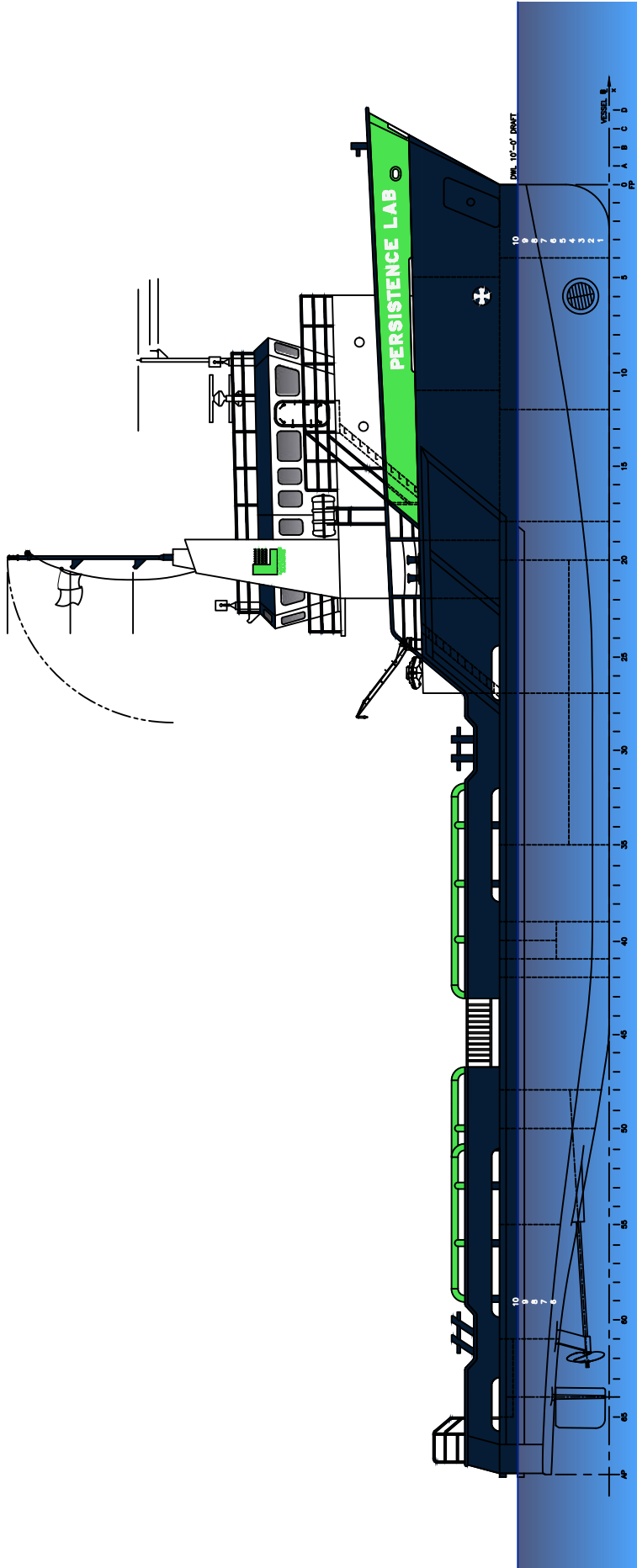
SPECIAL FEATURES

A complete complement of Safety Standby Equipment, Scramble Net, Life Jackets, Blankets, Etc. FRC with Davit, Offshore Standby for 75 Persons

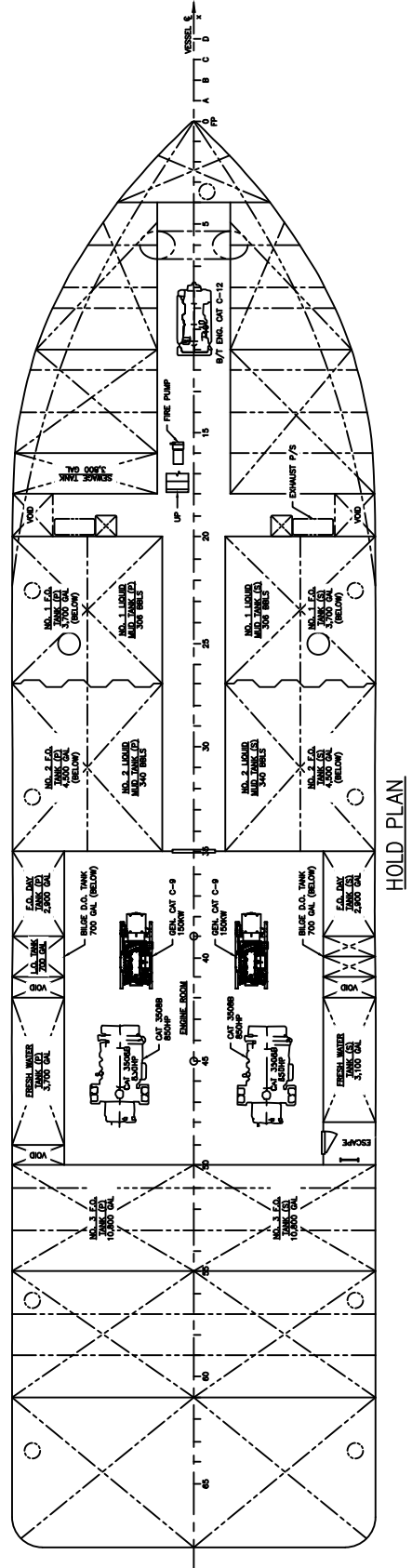
PERSISTENCE LAB

Discharge Rate	550 GPM	(125 M ³ /hr)
Discharge Rate	550 GPM	(125 M ³ /hr)
Discharge Rate	1,000 GPM	(227 M ³ /hr)

NOTICE: The data contained herein is provided for convenience of reference to allow users to determine the suitability of the Company's equipment. The data may vary from the current condition of equipment which can only be determined by physical inspection. Company has exercised due diligence to insure that the data contained herein is reasonably accurate. However, Company does not warrant the accuracy or completeness of the data. In no event shall Company be liable for any damages whatsoever arising out of the use or inability to use the data contained herein.



OUTBOARD PROFILE



HOLD PLAN

PERSISTENCE LAB