



RAPID RUNNER II

162' FSV

SAFE, DEPENDABLE, AND MODERN OFFSHORE SUPPORT

REGISTRATION

USCG Official Number	1183091
GRT / ITC	99
Net	67
IMO	9556246
Year Built	2008
Flag	USA
Builder	Breaux Bay Craft
O.N.	1183091
Certifications	Subchapters T

MAIN CHARACTERISTICS

Length overall	162 ft	(49.4 m)
Beam	30 ft	(9.1 m)
Depth	11.6 ft	(3.5 m)
Max Draft	8 ft	(1.7 m)
Min Draft	7 ft	(2.1 m)

PERFORMANCE

Max Speed	22 knots	300 gal/hr	(1,135 l/hr)
Cruising Speed	18 knots	225 gal/hr	(851 l/hr)
Standby (Genset)	0.0 knots	50 gal/da	(189 l/da)

MACHINERY

Main Engines	4x Caterpillar 3512B
Total Horsepower	6,300 BHP
Main Propulsion	Conventional
Total Horsepower	6,300 BHP
Main Generators	2 John Deere 6068
Total Rating	(2) 80 kW
Bow Thrusters	1 X Tunnel
Total Horsepower	300 HP
Power Generator	208V

CAPACITIES AND DISCHARGE RATES

Deadweight	416 Lt	(422Mt)
Deck Capacity	267 Lt	(271Mt)
Deck Strength	400 lbs/ft ²	(2 t/m ²)
Cargo Deck Area	97 ft x 24 ft	(2,328 ft ²)
	30.5 M X 7.62 M	(232 M ²)
Drill/Rig Water	29,580 USG	(112 M ³)
Fuel	16,560 USG	(62.7 M ³)
Potable Water	821 USG	(3.11 M ³)

ELECTRONICS

- (1) AIS
- (1) GPS
- (2) Radars
- (2) VHF Radios
- (1) SSB Radios

ACCOMMODATIONS

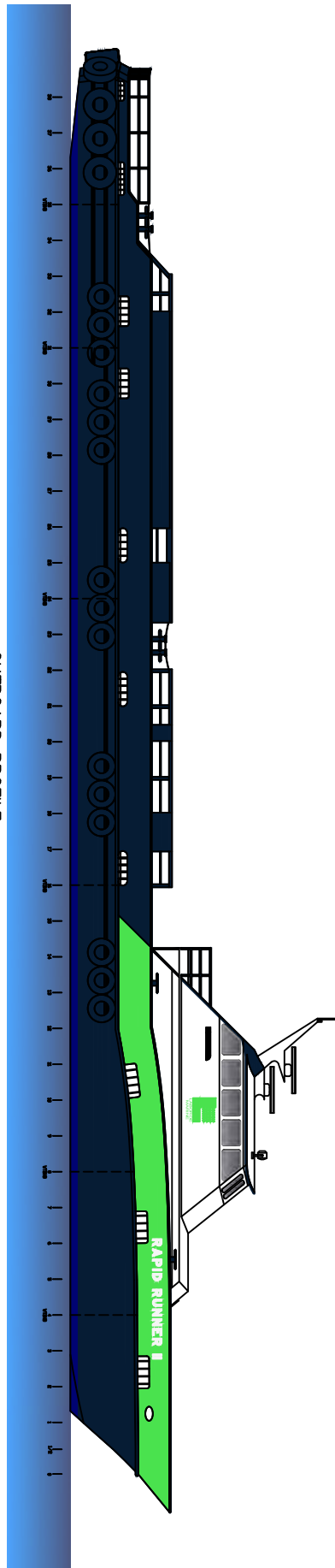
Accommodations for 8 persons in 4 staterooms
72 seats with all required safety equipment

RAPID RUNNER II

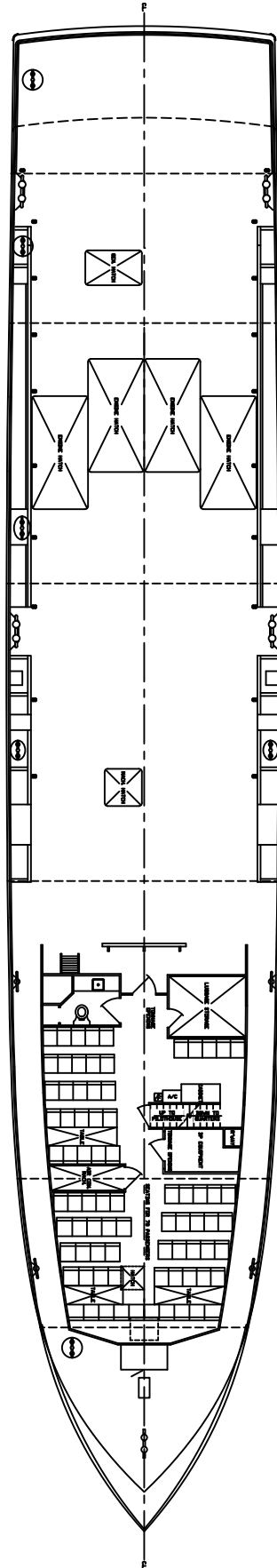
Discharge Rate	150 GPM	(304.2 M ³ /hr)
Discharge Rate	150 GPM	(304.2 M ³ /hr)

NOTICE: The data contained herein is provided for convenience of reference to allow users to determine the suitability of the Company's equipment. The data may vary from the current condition of equipment which can only be determined by physical inspection. Company has exercised due diligence to insure that the data contained herein is reasonably accurate. However, Company does not warrant the accuracy or completeness of the data. In no event shall Company be liable for any damages whatsoever arising out of the use or inability to use the data contained herein.

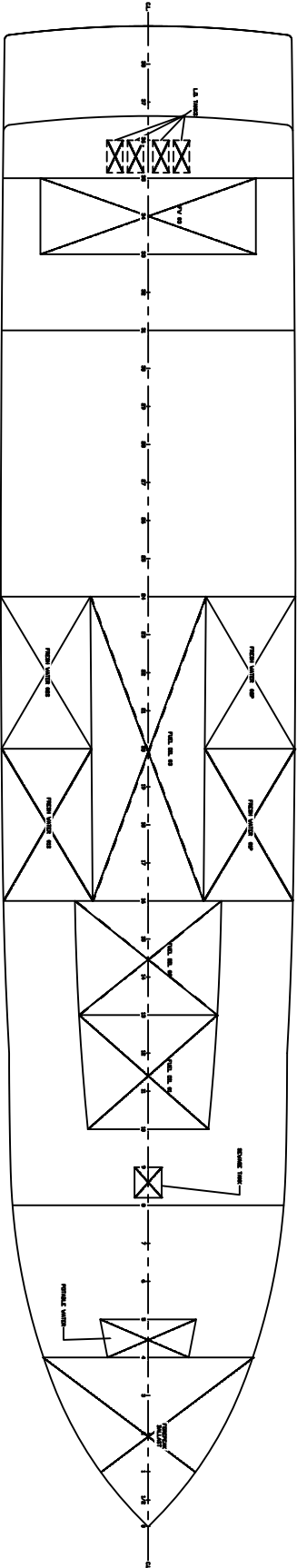
RAPID RUNNER II



OUTBOARD PROFILE



MAIN DECK PLAN



HOLD PLAN